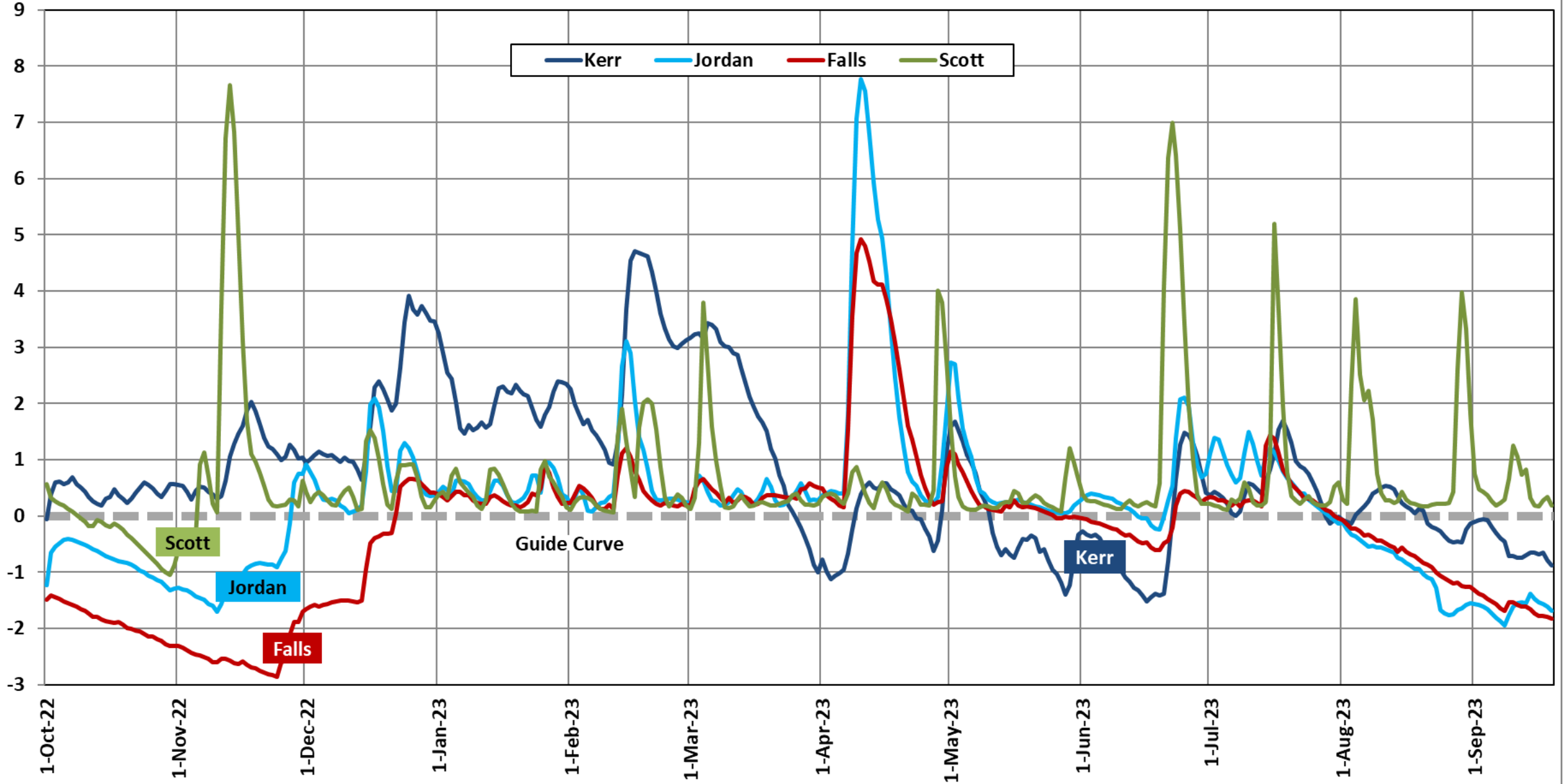


Corps Reservoir Levels Since 1-Oct-2022 (Feet Above or Below Guide Curve)



Corps of Engineers Reservoir Update – 19 Sep 2023

Falls

- Drought Contingency Plan already in effect
- 1.85 ft below guide curve
- 65.8% WQ storage / 90.2% WS storage
- coordinated reduction in Clayton flow target from 254 to 230 cfs
- normal reduction to 184 cfs in Nov; may request to implement sooner
- forecast to drop below 60% WQ storage by end of month

Jordan

- Drought Contingency Plan going into effect this week
- 1.7 ft below guide curve
- 80.5% WQ storage / 99.5 WS storage
- prescribed reductions in Lillington flow target per DCP when WQ<80%
- anticipate implementing reductions starting next week (pending rain)

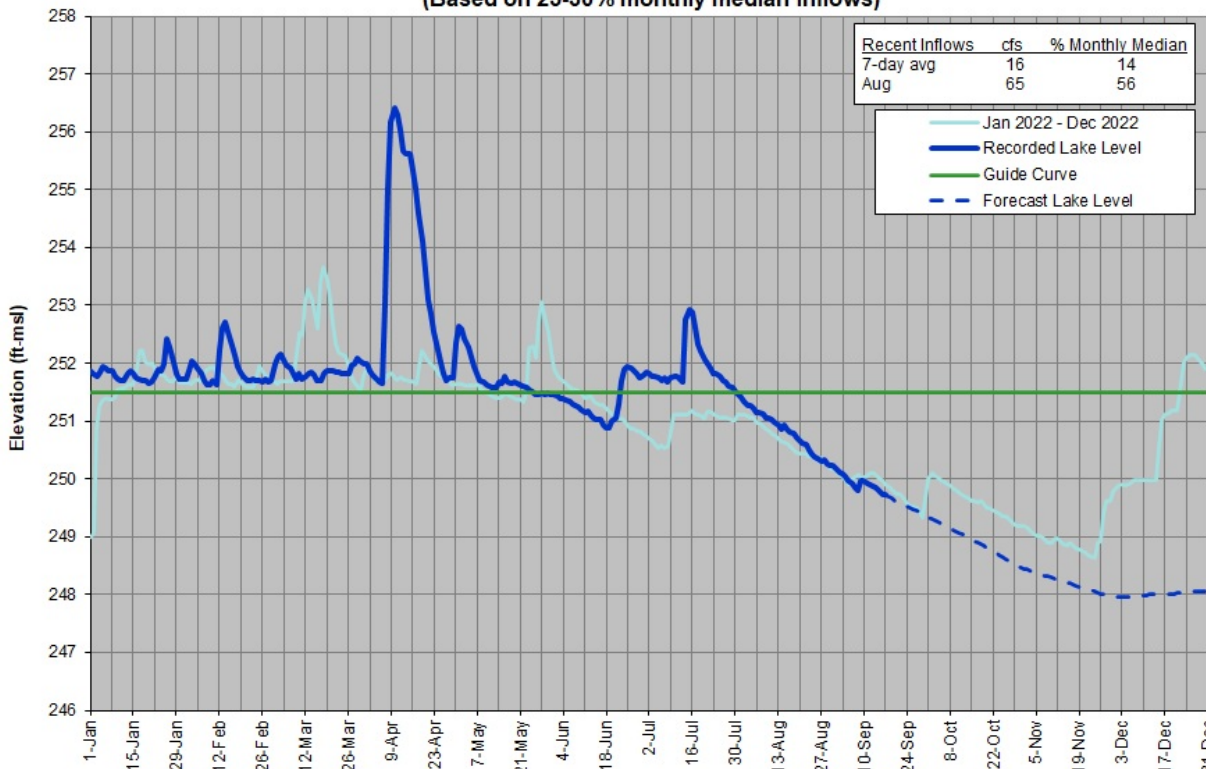
JH Kerr

- Minimum Energy operations
- 0.9 ft below guide curve

WK Scott

- Normal operations (0.2 ft above guide curve)

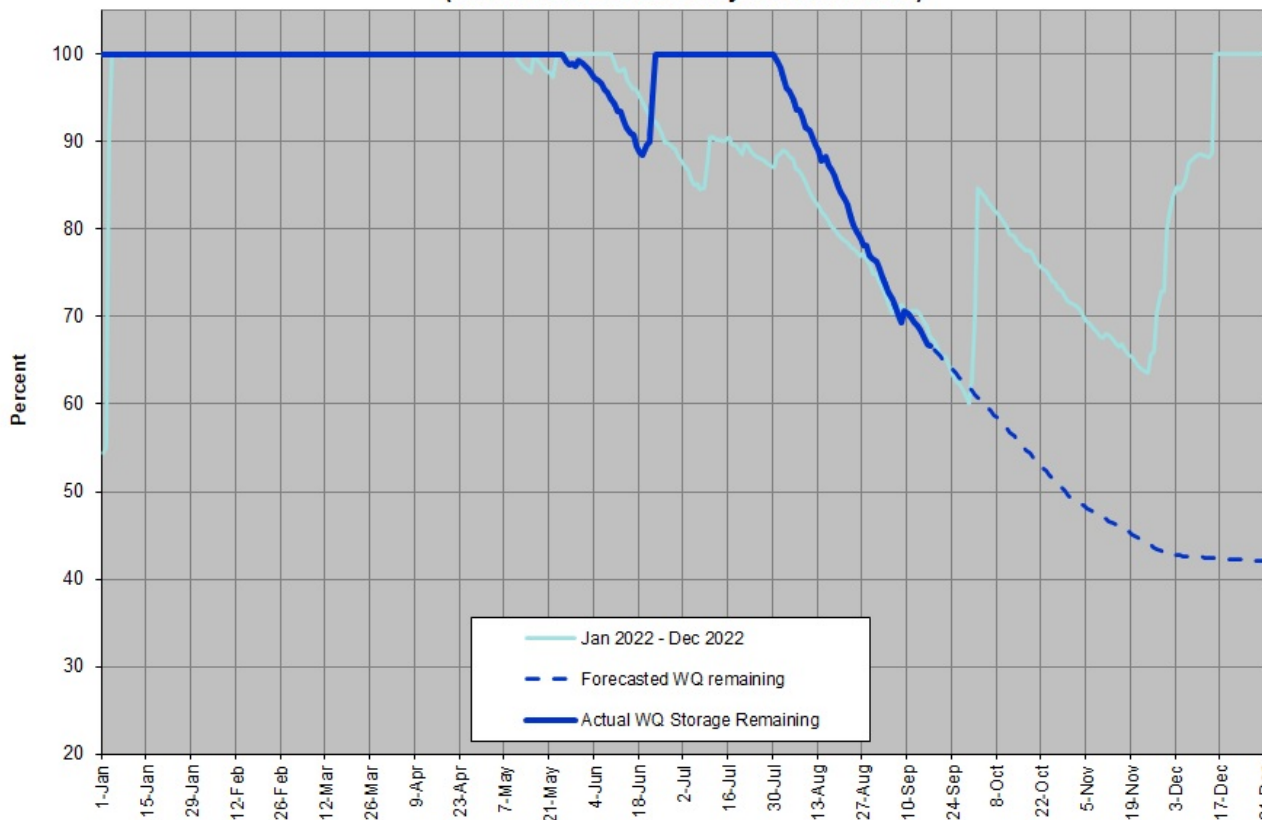
Falls Lake Level -- 18 September 2023
 (Based on 25-30% monthly median inflows)



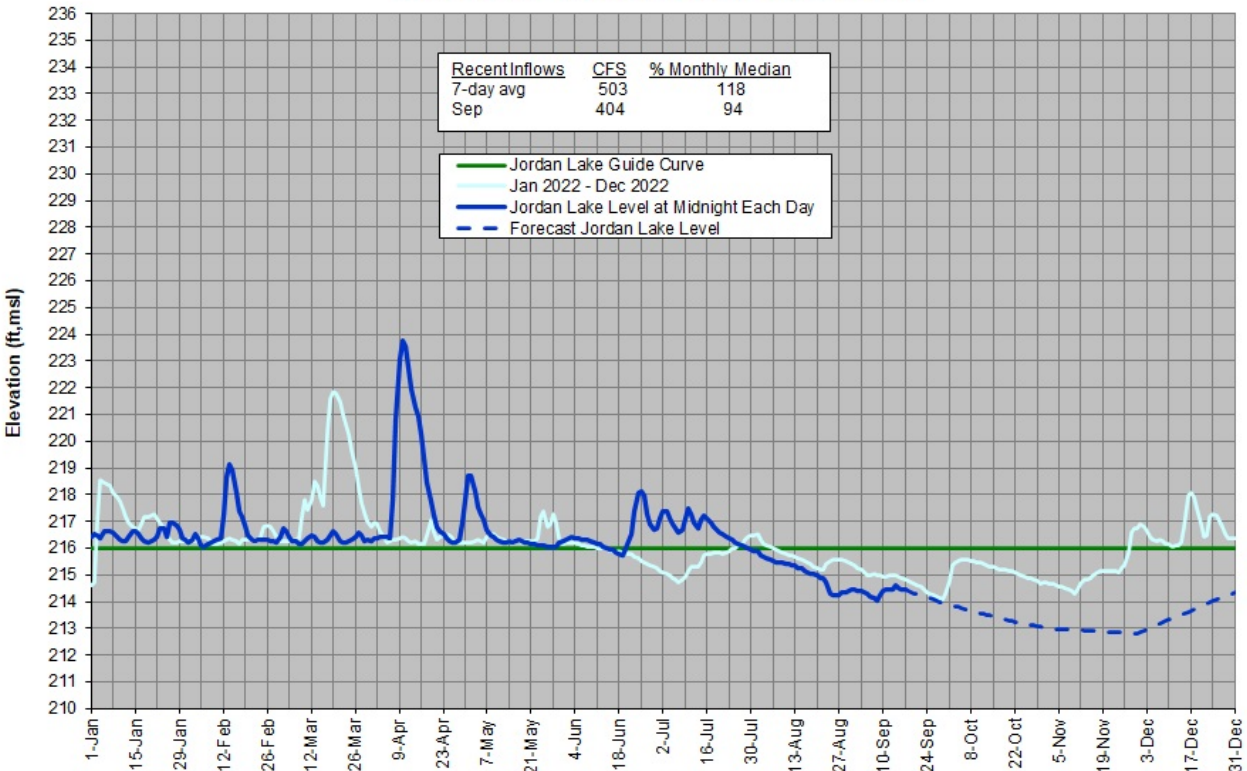
Falls Lake Water Supply Storage Remaining -- 18 September 2023
 (Based on 25-30% monthly median inflows)



Falls Lake Water Quality Storage Remaining -- 18 September 2023
 (Based on 25-30% monthly median inflows)



Jordan Lake Level -- 18 September 2023
 (Based on 40 - 50% avg monthly median inflows)



Jordan Lake Water Supply Storage Remaining -- 18 September 2023
 (Based on 40 - 50% avg monthly median inflows)



Jordan Lake Water Quality Storage Remaining -- 18 September 2023
 (Based on 40 - 50% avg monthly median inflow)

